



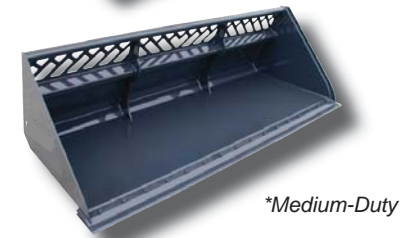
EDGE® BULK MATERIAL/SNOW BUCKETS
 There are more than 60 EDGE compact loader buckets to choose from. Various buckets range from dirt/construction, low profile, bulk material, snow buckets and utility buckets. These buckets are available for compact loaders with universal mounting system.

OPERATIONAL BASICS

EDGE bulk material buckets are available in standard, medium-duty and heavy-duty models. Standard-duty buckets are recommended for less than 2,400 lbs/1088 kg. Medium-duty buckets include an 8" mesh window for increased visibility and are recommended for greater than 1800 lbs/816 kg. Heavy-duty buckets include a 12" mesh window for even greater visibility and are recommended for greater than 2400 lbs/1088 kg. The weld-on edge is 6" (152 mm) x 3/4" (19 mm) thick.

SPECIFICATIONS

Bucket Type	Model	Weight (lbs/kg)	Overall Width (in/mm)	Heaped Cap. (ft ³ /m ³)	Depth (in/mm)	Height (in/mm)
Standard Duty	EBMB60	500/227	61.5/1562	22.3/63	37.6/955	26.6/676
	EBMB66	535/243	67.5/1714	24.5/69		
	EBMB72	570/259	73.5/1867	26.6/75		
	EBMB78	605/274	79.5/2019	28.8/82		
	EBMB84	640/290	85.5/2172	31/88		
Medium Duty	EBMB96	770/349	97.5/2477	35.3/1.0	40.6/1031	29.8/757
	EBMM72	680/308	73.5/1867	32.5/92		
	EBMM78	710/322	79.5/2019	34.6/98		
	EBMM84	745/338	85.5/2172	37.2/1.1		
	EBMM96	810/367	97.5/2477	42.6/1.21		
Heavy Duty	EBMM101	830/376	101.5/2578	44.5/1.26	45.5/1156	40.5/1029
	EBMH78	950/431	79.5/2019	48.1/1.36		
	EBMH84	1050/476	85.5/2172	51.8/1.47		
	EBMH96	1180/535	97.5/2477	59.3/1.68		
	EBMH101	1250/567	101.5/2578	62.6/1.77		



*Medium-Duty and Heavy-Duty buckets are shown with optional bolt-on cutting edge

FEATURES

- Perfect for handling snow, feed, grain and other bulk materials
- Standard, medium and heavy-duty models

	Radial Skid Loaders							Vertical Skid Loaders			Track Loaders			Articulated Loaders			
Machine Compatibility Gehl / Mustang	3640E/ 2026	R135/ 1350R	R150/ 1500R	R165/ 1650R	R190/ 1900R	R220/ 2200R	R260/ 2600R	V270/ 2700V	V330 3300V	V400/ 4000V	RT175/ 1750RT	RT210/ 2100RT	RT250/ 2500RT	340	540	650/ 608	750/ 708
*Bulk Material/Snow Bucket	◆	◆	◆	◆	◆	◆	◆	◆	◆	◆	◆	◆	◆	◆	◆	◆	◆

*Note: Machine compatibility is based on operating capacity of the machine and the weight of the attachment